

# TBI MATERIALS



# OUTLINE

- 01 Company Profile
- 02 WWRC & TBIM worldwide
- 03 Product Line Overview
- 04 Warehouse in TAIWAN
- 05 TBIM Product Overview
- 06 Business Operations & History
- 07 Electronic Gas Supply Source
- 08 Quality Control
- 09 ESG
- 10 Social Responsibility Employee Welfare
- 11 Major Customers





# WWRC and TBIM company profile



TBI Material, established in Taiwan in 2015, is a wholly-owned subsidiary of the global trading company WWRC. Specializing in technical services and solutions for the electronic technology industry, the company supports sectors like semiconductors, electronics, PCB, and optoelectronics.

Building on WWRC's 35+ years of expertise, TBI Material introduces advanced products and has earned the trust of clients and suppliers worldwide. Committed to steady growth, it continues to drive Taiwan's high-tech innovation.

## **WWRC (Taiwan)**

**Office: Kaohsiung/Taoyuan**  
**Warehouse: Chiayi**  
**Employees : 50**

## **TBIM**

**Office: Kaohsiung/Taoyuan**  
**Warehouse: Chiayi**  
**Employees : 12**





# WWRC and TBIM worldwide





**WWRC**  
Singapore Malaysia Taiwan USA Korea Thailand Philippines Indonesia  
Vietnam Japan

**TBIM**  
Taiwan Singapore



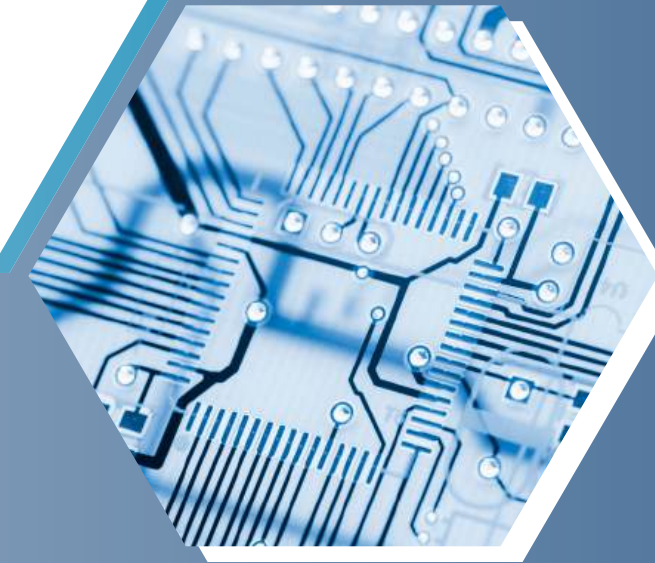


# Product Line Overview





- Electronic
- Polymer/resin
- Coating & ink
- Construction
- Plastic/rubber
- Adhesive
- Cosmetics
- Pharmaceutical
- Textile







# Warehouse in Taiwan





# Land Area of 20,000m<sup>2</sup>

## Development:

- Office Complex
  - Potential value added services
  - Warehouse
  - Manufacturing
- 
- Gas Logistic:  
Plan to establish gas storage facility  
in Chiayi in 2024







# TBIM Product Overview





# Electronic Glue

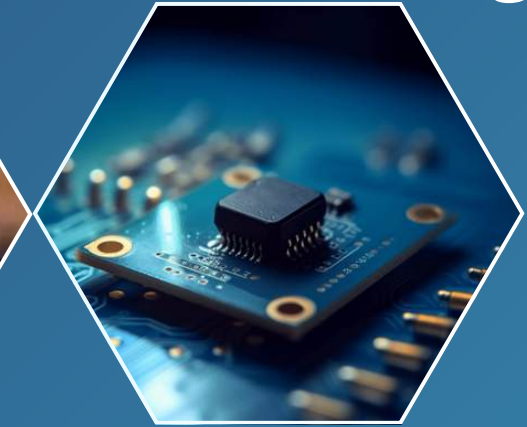
Encapsulation



Bonding & Sealing



MEMS Package



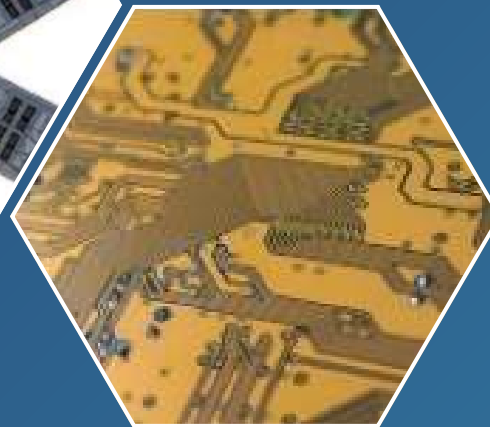
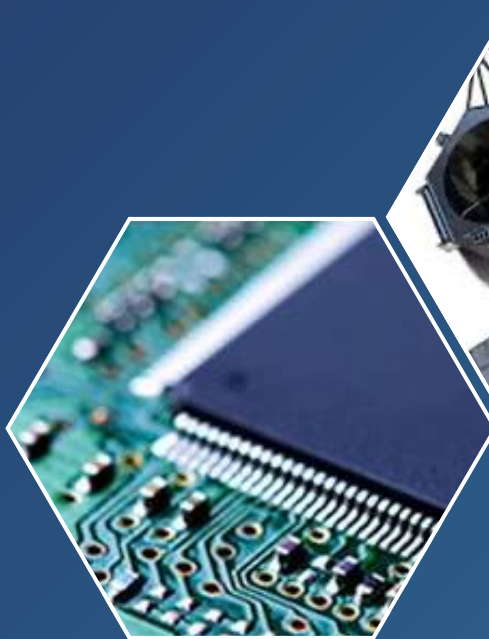
Thermally Conductive

Conformal Coating

Optical Bonding

## Functional Epoxy

Composite



IC Molding

CCL

## Precursor







- Laser Gas, PH3 Mix, GeH4 Mix
- C2H2(DMF)
- NF3
- WF6
- SF6, CH2F2, ClF3
- HCl, HBr, 3MS, C3H6
- Si2H6, DCS
- COS
- CO2



# Formulated Chemical

## Metal Etchants

- Cu: From 20um / 20um to 2 um / 2 um, low undercut.
- Ti: Single reagent or dual reagents, long lifetime.
- Gold Bump Au Etching : KI/I2 with high or low E/R
- Al/Ni/Si/Ag...etc etchant

## Resist Strippers

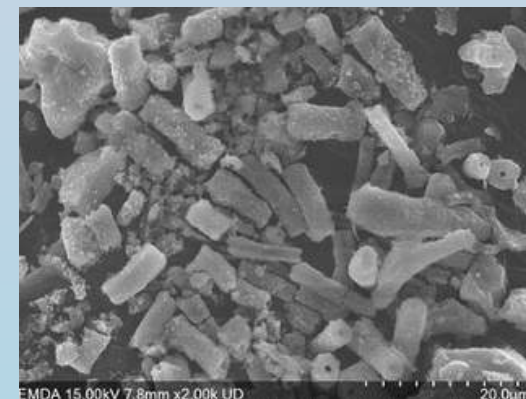
- Post / Neg/ PI/ Dry-film/Thick Film
- Metal corrosion-free formulation
- Non DMSO/NMP contained

## Functional clean

- Glue remover
- Functional remover

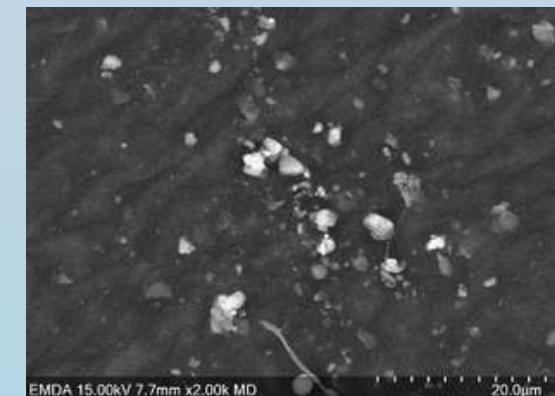
### BEFORE CLEAN

>10uM Particle >90%



### AFTER CLEAN

>10uM Particle <10%  
0.5~5uM >90%  
dissolve





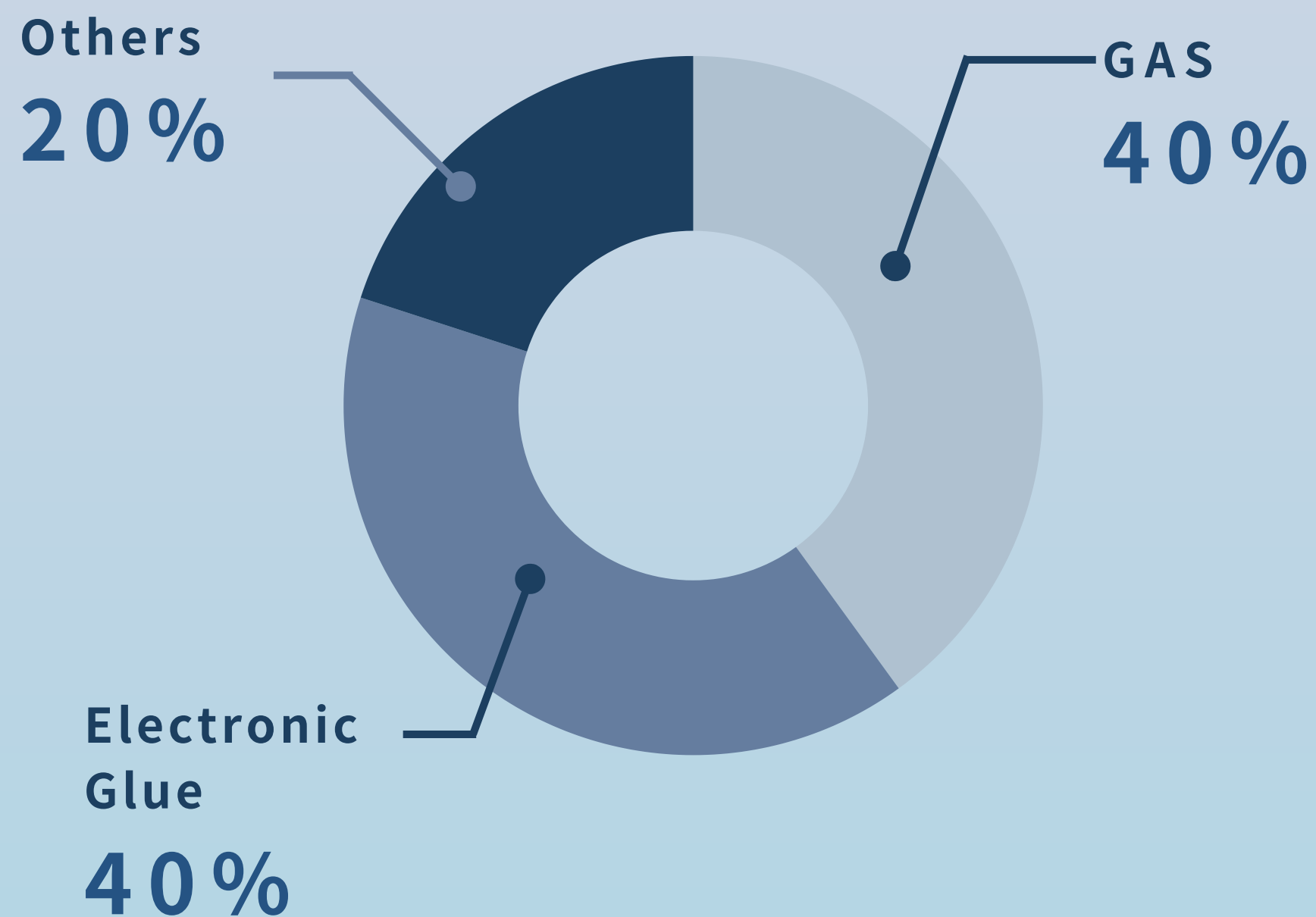


# Business Operations & Company History

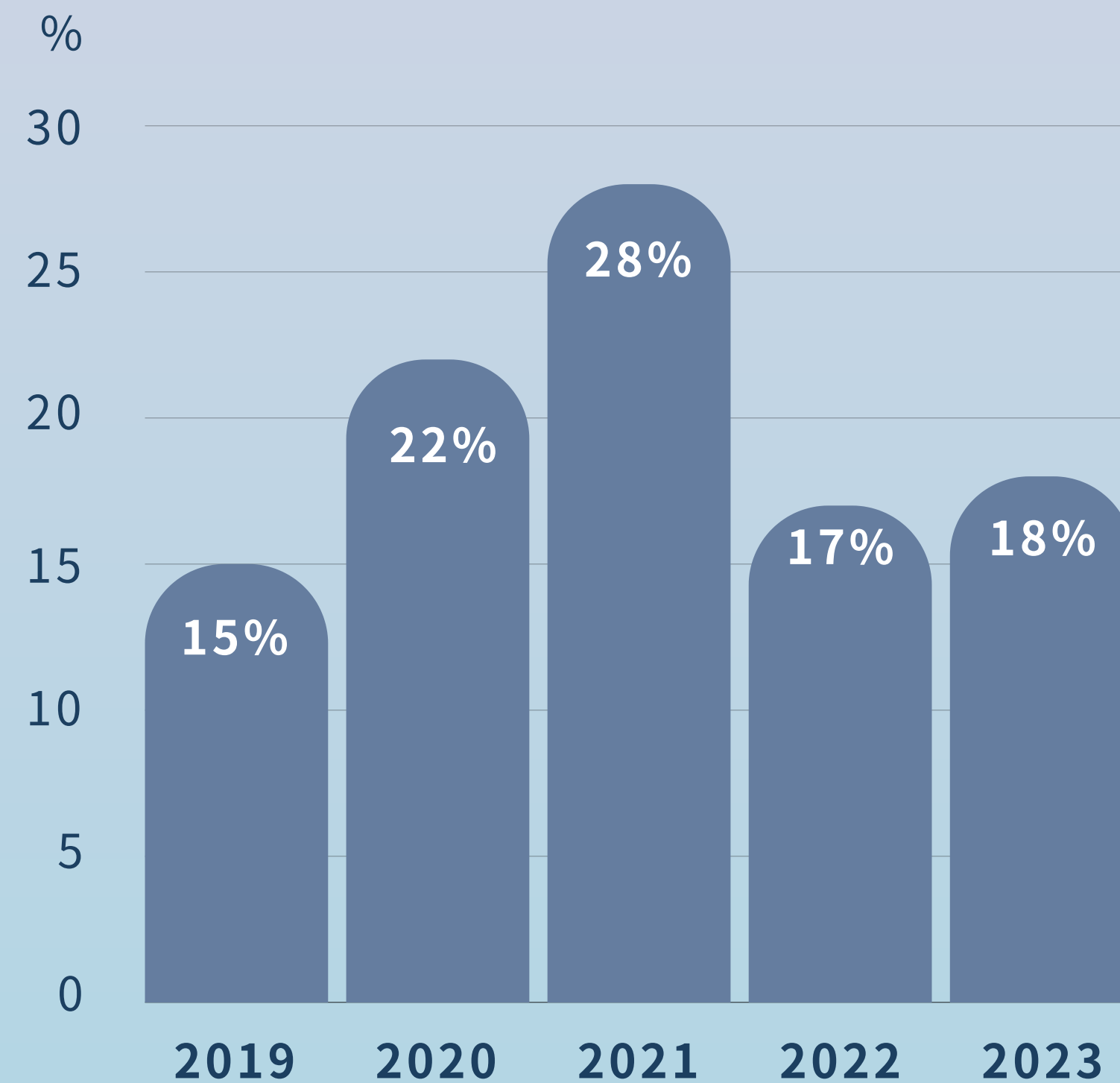




## Sales Distribution



## Revenue Growth





**2015**

- The company was established.
- Authorized as the agent for German WACKER.

**2016**

- Focused on the solar energy .
- Main products:
  - \*Struture glue
  - \*optical glue.
- Get the vender code from Garmin

**2017**

- Entered the electronic gas industry.
- Supply Argon.

**2018**

- Supply
  - \*CO2
  - \*BCl3
  - \*HCl

**2019**

- Helium source from Qatar.
- Supply
  - \*1% GeH<sub>4</sub>/H<sub>2</sub>
  - \*laser gas

**2020**

- Get TSMC vender code.
- Supply PH3

**2021**

- Supply
  - \*10%GeH<sub>4</sub>/H<sub>2</sub>
  - \*Fluorocarbon Gases
- Get N2O license
- Get DMF license

**2022**

- Supply TMS .
- Get fluorine license.

**2024**

- On going
- B2H6 local Mix.
  - Gas plant and storage planning. (HBr, NF3, WF6, C2H4, BCl3)





# Supply Source







Source from  
TAIWAN | CHINA | UKRAINE | KOREA | GERMANY | QATAR | VIETNAM



# Quality Control





## Inventory Management:

- Monitor the raw material market
- Coordinate with the supplier to adjust production and inventory quantities

## How to Manage

## IQC & SPC CHECK:

- Pressure and appearance Check
- COA check and SPC monitoring







# ESG





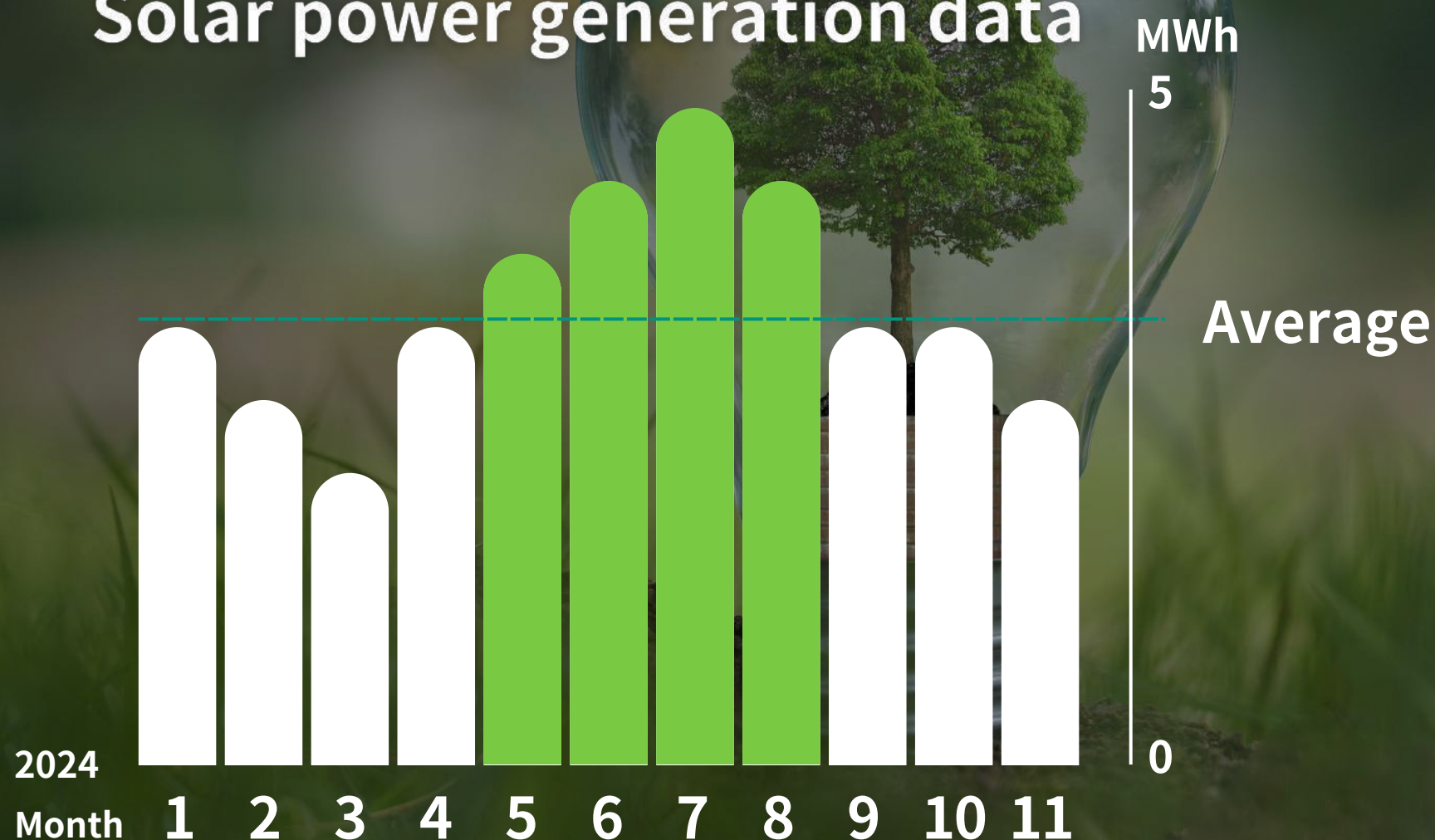


TBI has implemented a solar power generation system, with 100% of the factory's electricity sourced from green energy.



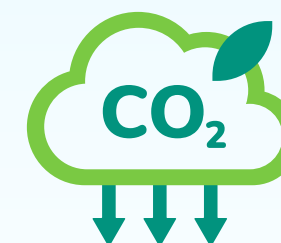
**100%**  
Green power

### Solar power generation data



### Carbon emission reduction

Offset carbon  
emissions



**2769**  
hectare

Tree absorption  
capacity



**420,000**  
Trees



# Social Responsibility

## Employee Welfare







# Social Responsibility

## Travel



# Major Customers








**INNOLUX**  
群創光電

 **PSMC**  
力晶積成電子

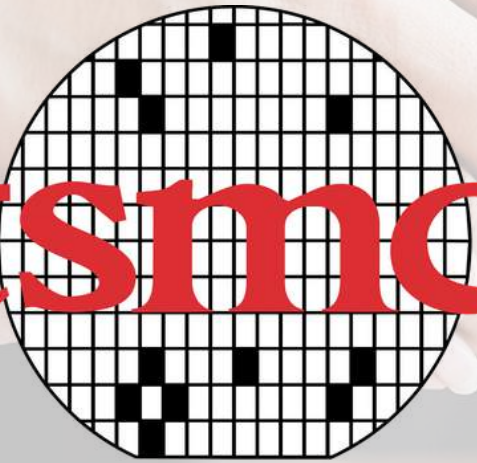
**UMC**

 台灣神隆股份有限公司  
ScinoPharm Taiwan, Ltd.

 **PROMATE  
SOLUTIONS**

  
Nanmat Technology Co., Ltd  
南美特科技

 **GIS**

 **tsmc**

**NUO**

 **COMPAL**

  
**NANYA**

**Innotron**

 **GARMIN™**